



72 x 72mm

Features :

- True RMS measurement
- Analog style bar graph for current representation
- CT Primary programmable up to 5000A
- Selector switch for page selection
- CE & RoHS certified

Certifications : **CE**

Display Specifications

Display	7 segment LCD Display
Digits	4
Digit Height	0.56" (14.2mm)
Display range	0-6200A
Resolution	0.001, 0.01, 0.1, 1A (Depending upon CT primary)

Input Specifications

Electrical Connection	3Ø- 4 wire
Input Type	AC
Rated current	5A
Input Current Range	50mA – 6.2A AC
Continuous Max. Input Rating	120% of rated current
Accuracy	±0.5% of F.S.
Frequency Range	50 / 60Hz

Electrical specification

Installation category	III
High Voltage Test	2kV AC, 50Hz
IP protection	IP51 Front only
Sampling Rate	3 samples / second
Dielectric withstand Voltage	2kV AC between auxiliary supply & measuring input
Rated Impulse withstand Voltage	2kV (1.2/50µS)

Settable Parameters

CT Primary Settings	5, 10, 15, 20, 25, 30, 40, 50, 60, 75, 80, 100, 125, 150, 175, 200, 250, 300, 400, 500, 600, 630, 750, 800, 1000, 1200, 1500, 1600, 2000, 2250, 2500, 3000, 3200, 4000, 5000
CT Secondary Settings	5A Fixed

Environmental Specifications

Operating Temperature	-10°C to +55°C (14°F to 131°F)
Storage Temperature	-20°C to +75°C (-4°F to 167°F)
Humidity (non-condensing)	Upto 95% RH
Pollution degree	2
Altitude	Upto 2000 meters
Measurement Category	CAT III

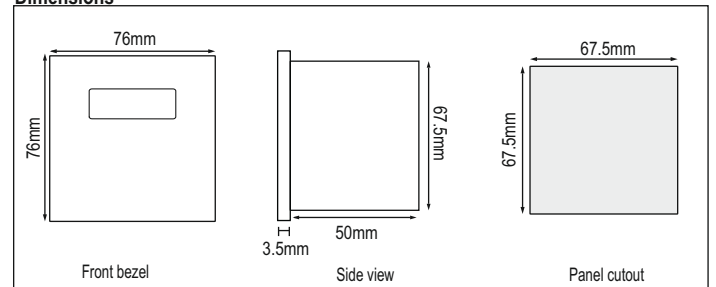
Auxiliary Supply Specifications

Auxiliary Supply	AC: 240V AC ±20% , (50/60Hz)
Supply Frequency	50 / 60Hz
Input Burden	0.5 VA @ 5A AC
Power Consumption	12 VA max

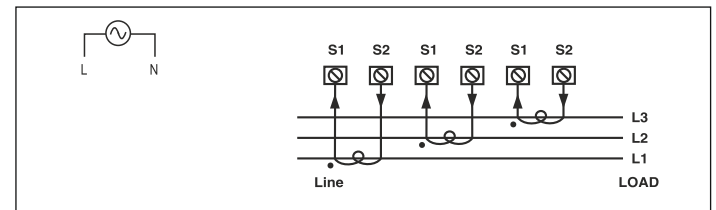
Mechanical Specifications

Mounting	Panel mount
Bezel size	72 mm x 72 mm
Overall depth	50 mm
Weight	163 gms
Torque at terminals	0.68 N-m to 0.79 N-m
Wire Gauge at terminals	20 to 14 AWG;75°C
Mounting position	Vertical

Dimensions



Terminal Connections



UL Cable Size (AWG): 20 to 14 ; Tightening Torque (Lb-inch): 6.018 to 6.992

IEC Cable Size (mm²): 0.5 to 2.5 ; Tightening Torque (N-m): 0.68 to 0.79

Ordering Information

Product Code	Supply Voltage	Certificación
MA2301	240V AC	■
MA2301-230V-CE	240V AC	CE

Note : CT Type-There is an internal CT with CT setting (5-5000A). For current input >5A, external CT is required.

Compliance

Applicable EMI / EMC Standards		
Product Standard : IEC 61326-1		
Category		Standards Compliance
ESD Immunity	IEC 61000-4-2	Level IV (Air discharge : 15kV), (Contact Discharge : -8kV)
Surge Immunity	IEC 61000-4-5	+/- 2kV common mode, (Line to ground) +/- 1kV differential mode, (Line to Line)
Radiated Susceptibility	IEC 61000-4-3	Level III, 80 to 1000MHz (10V/m) Level II, 1.4GHz to 2GHz (3V/m) Level I, 2GHz to 2.7GHz (1V/m)
Conducted Susceptibility	IEC 61000-4-6	Level II (3V/m)
Voltage Dips and Interruptions	IEC 61000-4-11	Dips : 0% residual voltage / 1 cycle (Criteria B), 40% residual voltage / 10 cycles 50Hz / 12 cycles 60Hz (Criteria C) 70% residual voltage / 25 cycles 50Hz / 30 cycles 60Hz (Criteria C) Interruptions : 0% residual voltage / 250 cycles 50Hz / 300 cycles 60Hz (Criteria C)
Conducted Emission	CISPR-11	
Radiated Emission	CISPR-11	
Electrical Fast Transient	IEC 61000-4-4	Level III (2kV)